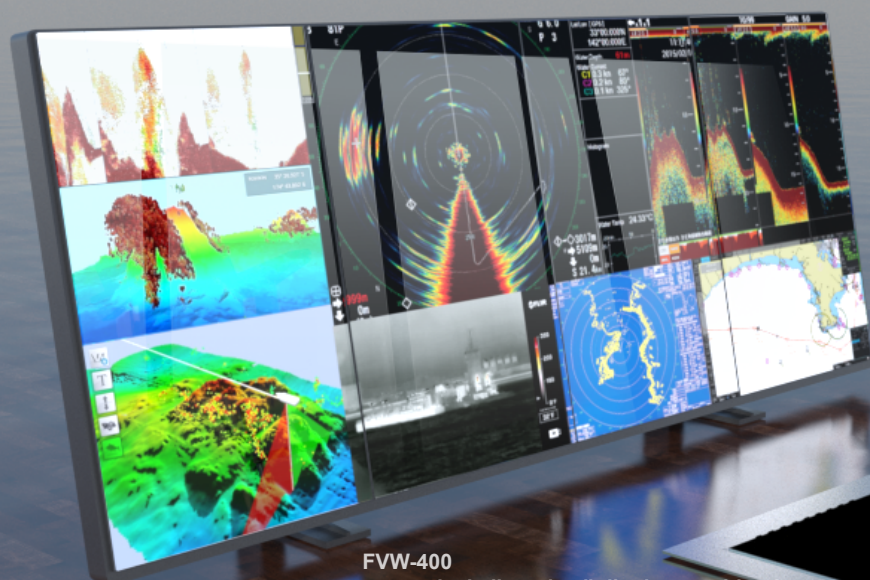
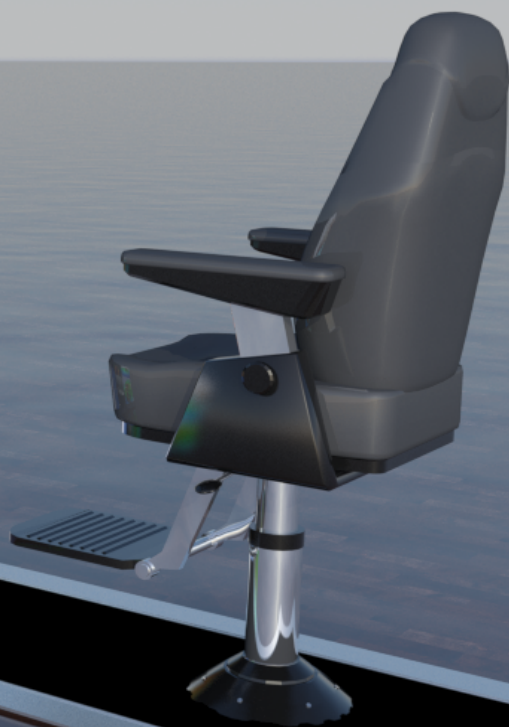


# Fully Customizable Display

# *VIDEO WALL*



FVW-400  
4 x vertical aligned 55" display combination



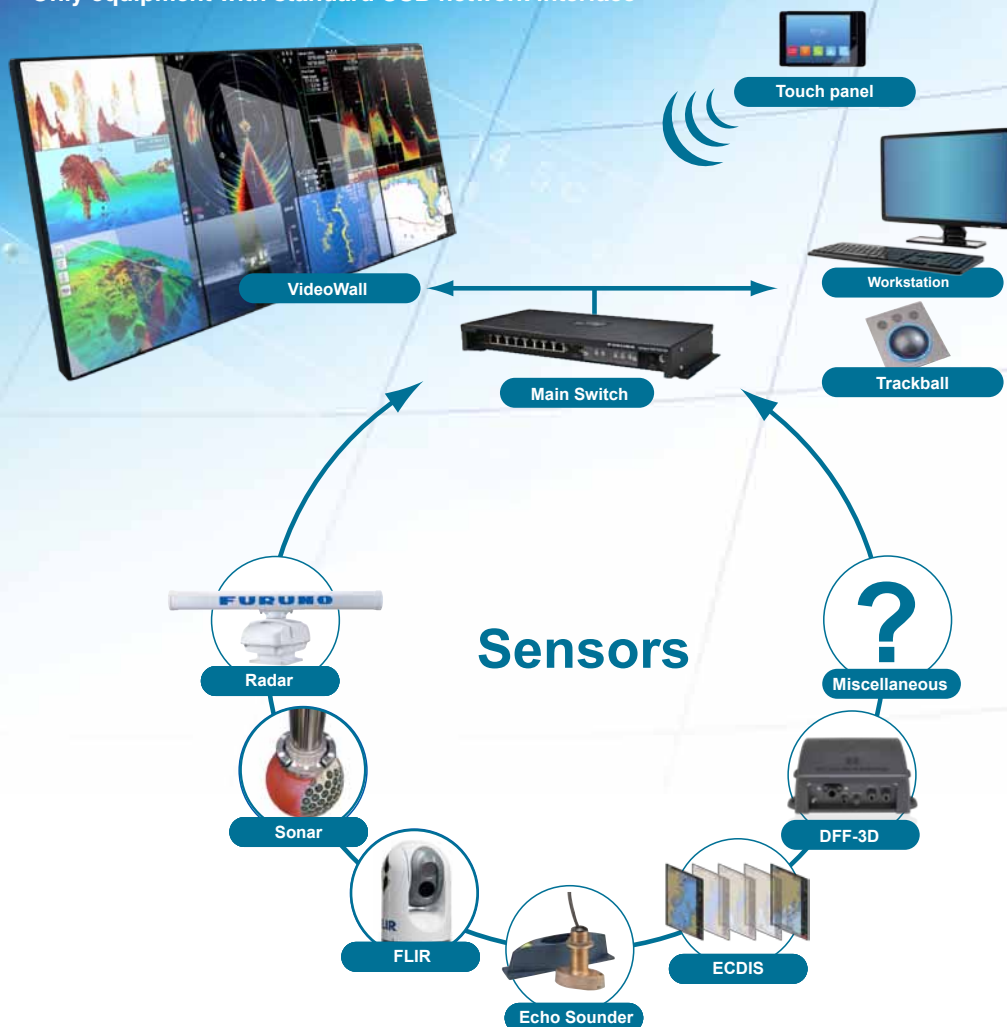
# VIDEO WALL

Complete and detailed overview of all navigation- and work activities with a single large display, customized to display all your wanted information.

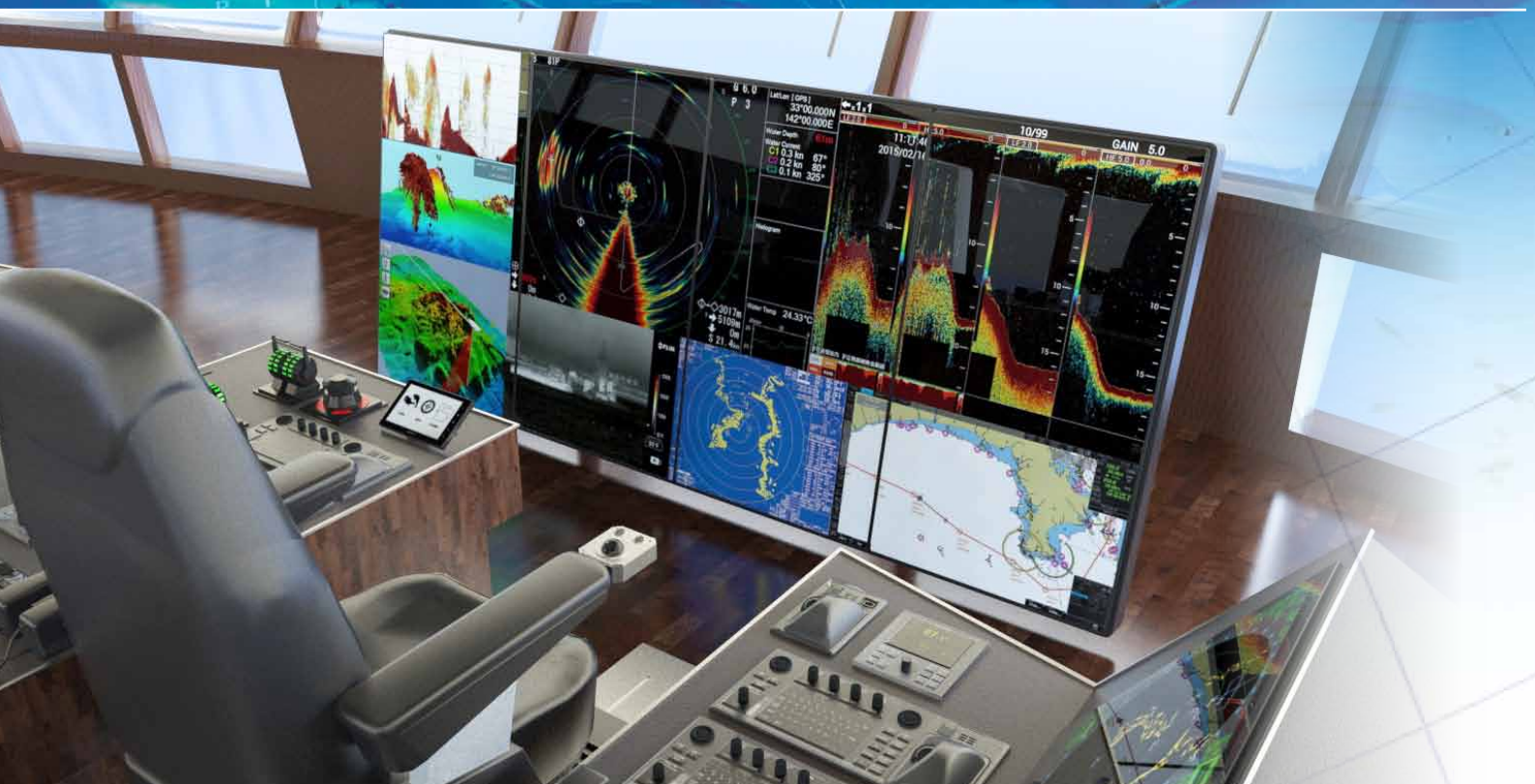
- ▶ Scalable display size, typical 4 x 55" display, working as one single big screen
- ▶ Virtually the only display you need on the front console\*
- ▶ Huge display area, many times larger than traditional multi-screen solutions
- ▶ Customizable setup for personal preferences
- ▶ Pre-configured setup for navigation, fishfinding, Skipper 1, Skipper 2 or other requirements
- ▶ Remote control by trackball and wireless touchpanel\*\*
- ▶ Display video from all network signals
- ▶ Easy installation for new buildings and retrofitting

\* IMO required monitors in the sideconsole may be mandatory

\*\* Only equipment with standard USB network interface







FVW-400: 4 x vertical aligned 55" display combination, with Touchpad, Trackball and Workstation.  
The setup display mainly fishingfinding information, combined with essential navigational information

## Combined Display size

The VideoWall is made up of any number of monitors. A setup of 4 x 55 inches, as seen in the image above, is a typical setup that provides the operator with an unparalleled overview. The display, composed by multiple individual displays, works as one big screen. This means that for example a radar-image can be extended to fill the entire display.

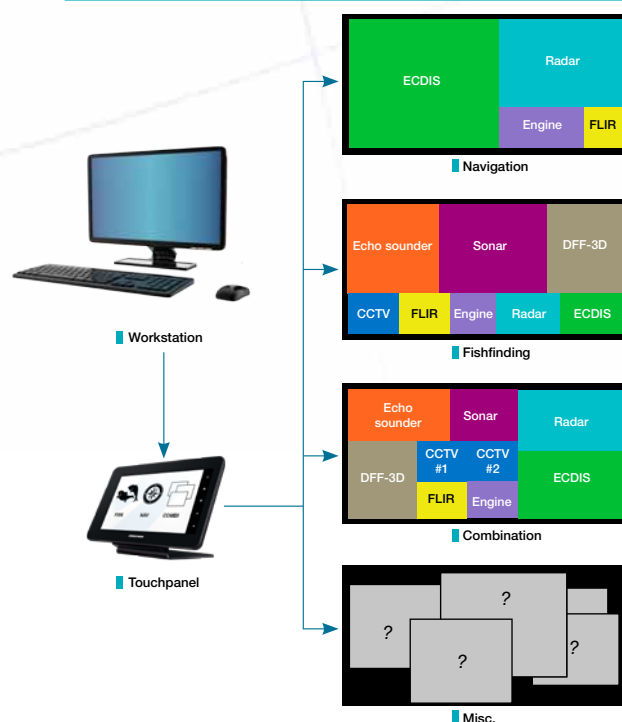
## Setup & Operations

The setup of the VideoWall is made from the Captain's Operator workstation. A PC that can be placed at any suitable position on board. A number of different compositions can be arranged, i.e. personal, specific setups for navigation, fishing or whatever the need might be.

Everyday operations of the applications on the VideoWall are done with a trackball and from a small touch panel of owner's choice. These controls can be placed on a suitable place, usually within reach of the navigator chair. From here the operator can easily choose among the predesigned personal set-ups.

The use of each of the applications in the set-up (like plotting targets on the Radar, changing range scale on the Sonar etc.) can be done from a simple trackball placed on the armrest or another comfortable position.

## Setup examples





*The best possible overview of all information you can ask for.*

## Placement of the VideoWall

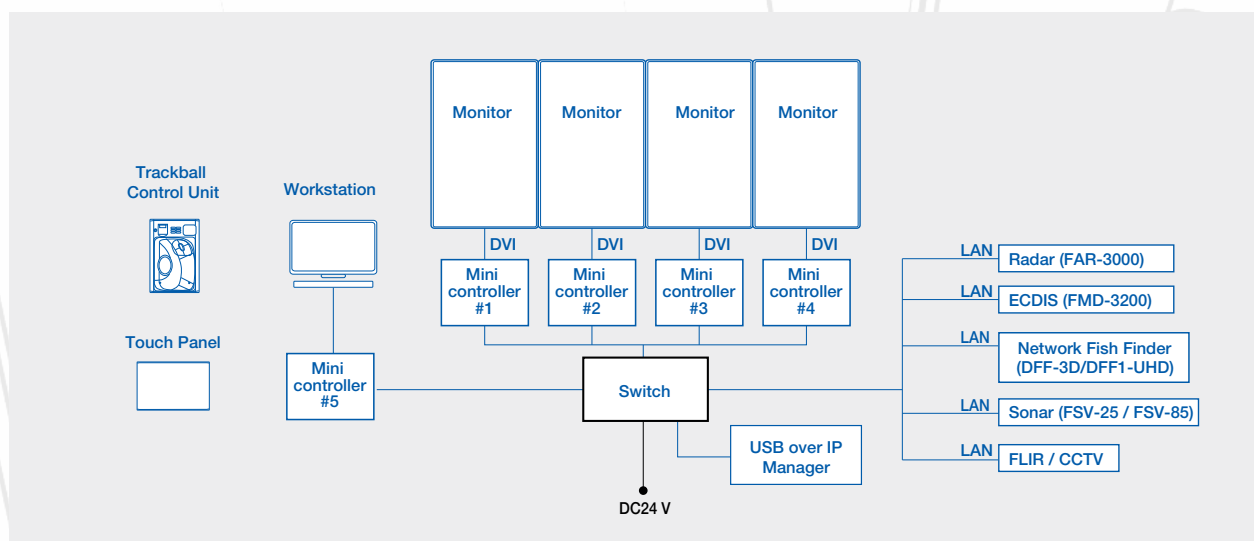
The VideoWall can be flushmounted as an integrated part of the bridge design or placed in brackets on the deck.

These brackets are made in a rugged design to ensure that the VideoWall can handle the demanding conditions at sea.

If the VideoWall is installed as a replacement of a traditional multi-monitor solution, a large amount of deckspace can be saved, in spite the much larger display size.



## Connection Diagram



FDK01102017



### FURUNO DANMARK A/S

Hammerholmen 44-48, 2650 Hvidovre, Denmark  
Phone: (+45) 36 77 45 00  
E-mail: furuno@furuno.dk  
[www.furuno.dk](http://www.furuno.dk)

### Esbjerg Branch Office

H. E. Bluhmesvej 77, 6700 Esbjerg  
Phone: (+45) 75 13 22 66  
E-mail: esbjerg@furuno.dk

### Skagen Branch Office

Værftssvej 4, 9990 Skagen  
Phone: (+45) 98 44 16 54  
E-mail: skagen@furuno.dk